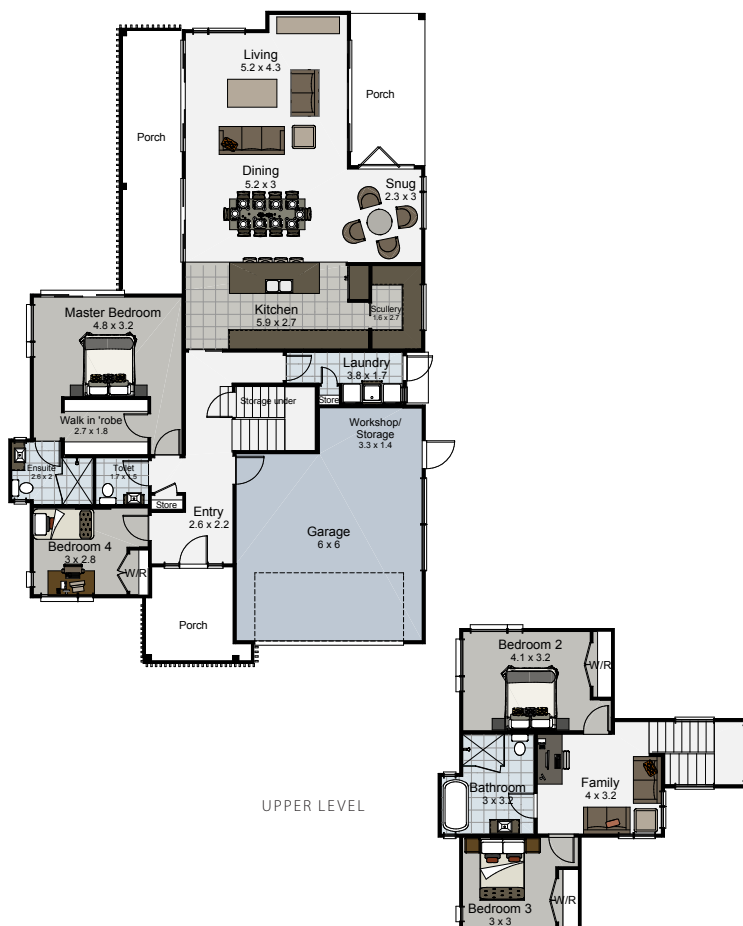


Patiki

248.7m²



Interesting rooflines and combination brick and shiplap cladding, give this home real street appeal. The open plan living and master suite on the ground floor makes for single level living with guest, or children's, bedrooms and family room upstairs. Expansive sliders open both sides of the living spaces to outdoor living at any time of day. Porch rooflines give protection from sun and rough weather. An extra 'snug' space off the dining area opens to morning sun. The Patiki is a great layout for city living either for family or just you.

Special Features

- Striking rooflines with vertical detailing
- Open plan living and master suite on ground floor
- Combination painted brick and shiplap exterior
- Covered porches for outdoor living

Lower Floor Area	141.6m ²
Upper Floor Area	59.2m ²
Garage	47.9m ²
Total Floor Area	248.7m ²
Porches	38.7m ²
Total Area	287.4m ²
Total Area (over brick)	253.5m ²
Overall Dimensions	13.5m x 19m